

# Catlog



## EVEREST MAP PUBLICATION

Bafal, Kalanki, Kathmandu, Nepal

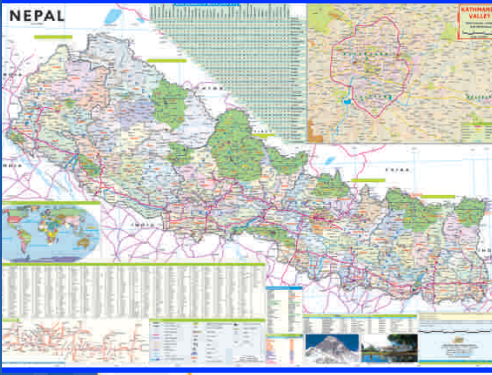
Tel : +977-1-4289053

P.O. Box : 23220

Email : [everestmap@gmail.com](mailto:everestmap@gmail.com)

Website : [www.everestmap.com](http://www.everestmap.com)

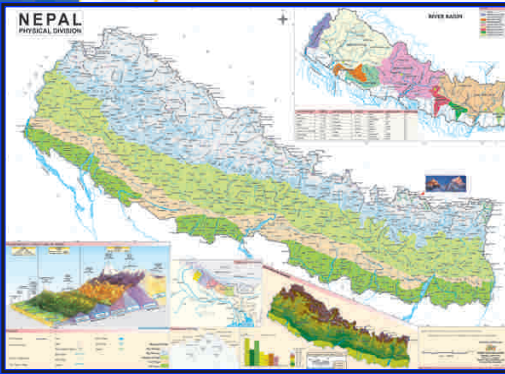
# MAPS



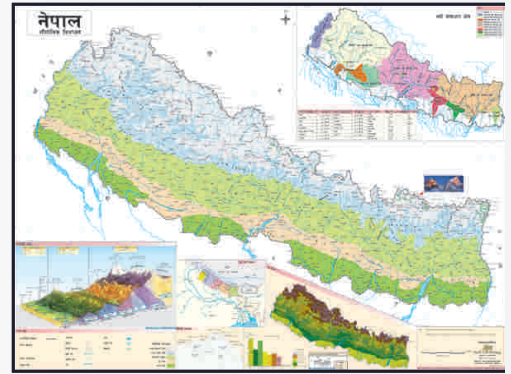
Nepal Political Map (English)  
Laminated with Dandi  
Size 28×40 Inch  
Scale 1:900000  
Price: Rs. 300



Nepal Political Map (Nepali)  
Laminated with Dandi  
Size 28×40 Inch  
Scale 1:900000  
Price: Rs. 300



Nepal Physical Map (English)  
Laminated with Dandi  
Size 28×40 Inch  
Scale 1:900000  
Price: Rs. 300



Nepal Physical Map (Nepali)  
Laminated with Dandi  
Size 28×40 Inch  
Scale 1:900000  
Price: Rs. 300



World Political Map (English)  
Laminated with Dandi  
Size 28×40 Inch  
Scale 1:27,500,000  
Price: Rs. 300

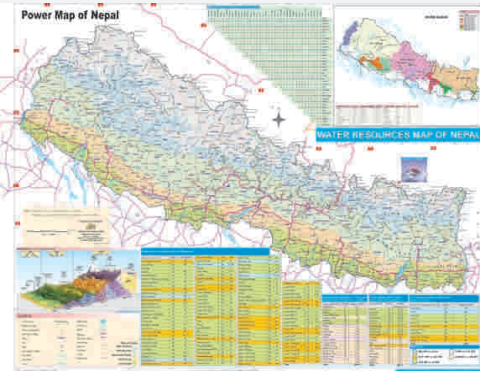
World Political Map (Nepali)  
Laminated with Dandi  
Size 28×40 Inch  
Scale 1:27,500,000  
Price: 300



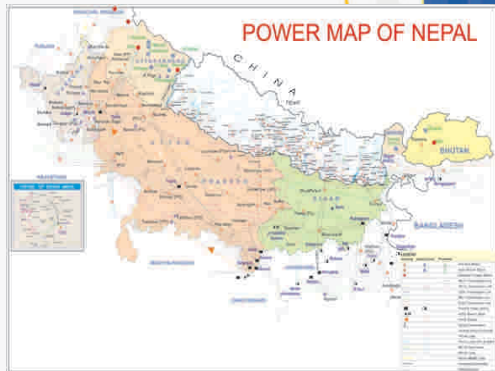
World Physical Map (English)  
Laminated with Dandi  
Size 28×40 Inch  
Scale 1:3,15,00,000  
Price: Rs. 300



World Physical Map (Nepali)  
Laminated with Dandi  
Size 28×40 Inch  
Scale 1: 3,15,00,000  
Price: Rs. 300



Power Map of Nepal (Both Side Print)  
Size 28×40 Inch  
Price: 500



World Political (English)  
Size 20×30 Inch  
Price: 150 (Hard Laminated)  
Price: 80 (Normal Laminated)



World Political (Nepali)  
Size 20×30 Inch  
Price: 150 (Hard Laminated)  
Price: 80 (Normal Laminated)

# MAPS

# MAPS



Nepal Area Map (English)  
 Size 20×30 Inch  
 Price: 150 (Hard Laminated)  
 Price: 80 (Normal Laminated)



Nepal Population Map (Nepali)  
 Laminated  
 Size 18×24 Inch  
 Scale 1:15,00,000  
 Price: Rs. 50



Nepal A3 Map (English)  
 Size 12×18 Inch  
 Price: 20



Nepal A3 Map (Nepali)  
 Size 12×18 Inch  
 Price: 20

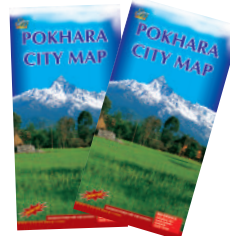
## Folding Map



Nepal Road Map  
 Scale : 1: 9,00,000  
 Size : 28×40  
 Price : 250



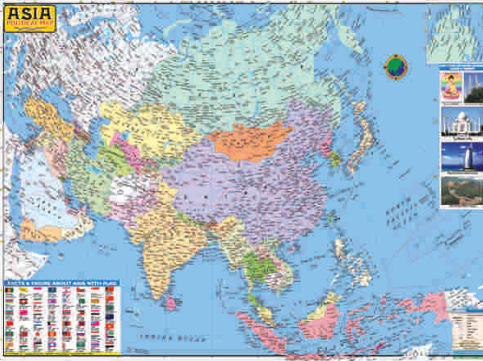
Nepal Physical Map  
 Scale : 1:15,00,000  
 Size : 18×24  
 Price : 80



Pokhara City Map  
 Scale : 1: 15,000  
 Size : 20×30  
 Price : 150



Kathmandu City Map  
 Scale : 1: 17,000  
 Size : 18×24  
 Price : 80



Asia Political Map (English)  
Laminated with Dandi  
Size 28×40 Inch  
Scale 1:1,43,00,000  
Price: Rs. 300



Asia Physical Map (English)  
Laminated with Dandi  
Size 28×40 Inch  
Scale 1:1,43,00,000  
Price: Rs. 300



Europe Political Map (English)  
Laminated with Dandi  
Size 28×40 Inch  
Scale : 1: 63,00,000  
Price: Rs. 300



Europe Physical Map (English)  
Laminated with Dandi  
Size 28×40 Inch  
Scale 1:63,00,000  
Price: Rs. 300



Australia Political Map (English)  
Laminated with Dandi  
Size 28×40 Inch  
Scale 1:72,00,000  
Price: Rs. 300



Australia Physical Map (English)  
Laminated with Dandi  
Size 28×40 Inch  
Scale 1:72,00,000  
Price: Rs. 300



Africa Political  
(English)  
Laminated with Dandi  
Size 28×40 Inch  
Scale 1:1,10,00,000  
Price: Rs. 300



North America Political  
(English)  
Laminated with Dandi  
Size 28×40 Inch  
Scale 1:1,10,00,000  
Price: Rs. 300



South America Political  
(English)  
Laminated with Dandi  
Size 28×40 Inch  
Scale 1:90,00,000  
Price: Rs. 300



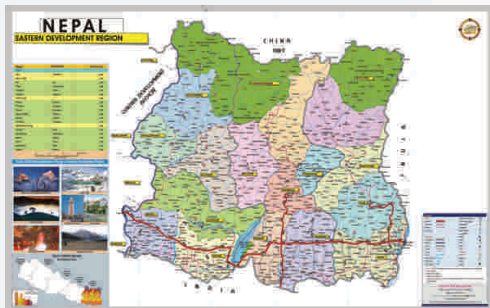
Africa Physical  
(English)  
Laminated with Dandi  
Size 28×40 Inch  
Scale 1:1,10,00,000  
Price: Rs. 300



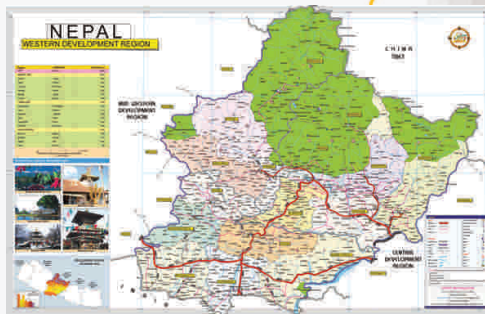
North America Physical  
(English)  
Laminated with Dandi  
Size 28×40 Inch  
Scale 1:1,10,00,000  
Price: Rs. 300



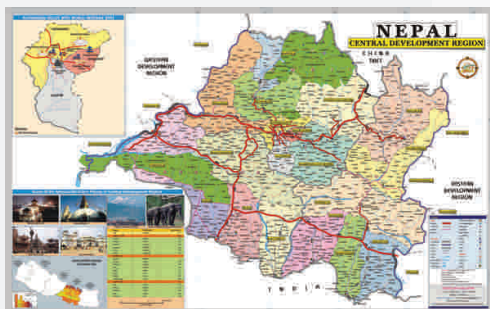
South America Physical  
(English)  
Laminated with Dandi  
Size 28×40 Inch  
Scale 1:90,00,000  
Price: Rs. 300



Eastern Development  
Laminated with Dandi  
Scale 1:4,00,000  
Price: Rs. 300



Western Development  
Laminated with Dandi  
Scale 1:4,00,000  
Price: Rs. 300



Central Development  
Laminated with Dandi  
Scale 1:4,00,000  
Price: Rs. 300



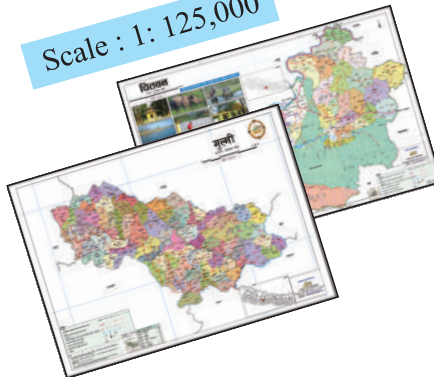
Far Western Development  
Laminated with Dandi  
Scale 1:4,00,000  
Price: Rs. 300



Mid Western Development  
Laminated with Dandi  
Scale 1:4,00,000  
Price: Rs. 300

## District Map

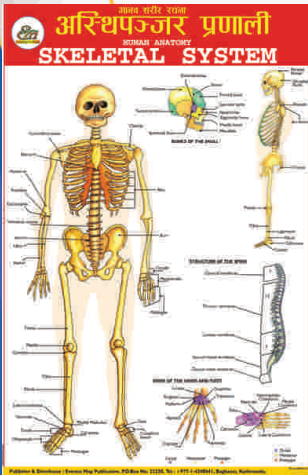
Scale : 1: 125,000



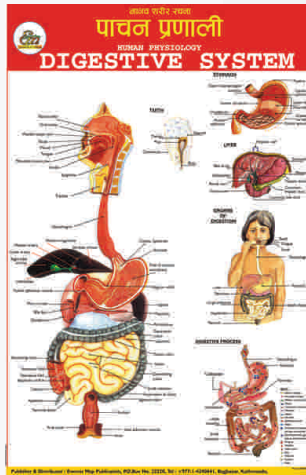
Plain Map Price : 100  
Laminated with Dandi Price : 200

1. Banke
2. Baglung
3. Chitwan
4. Dang
5. Darchula
6. Dolakha
7. Gulmi
8. Jhapa
9. Kailali
10. Kaski
11. Kapilbastu
12. Kathmandu, Lalitpur, Bhaktapur,
13. Nawalparasi
14. Palpa
15. Parbat
16. Rupandehi
17. Syangja
18. Tanahun

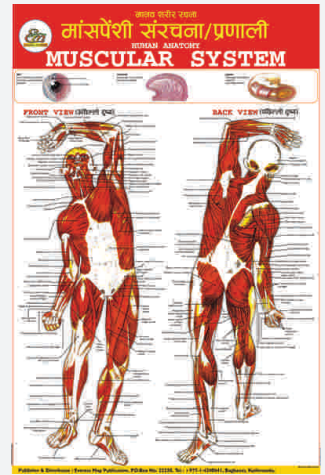
# SYSTEM CHART



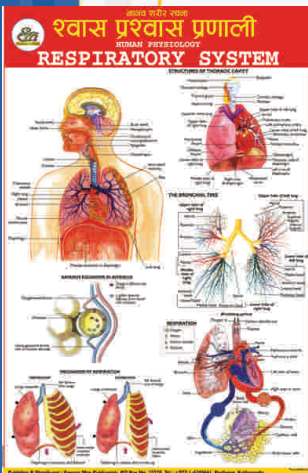
Skeletal System



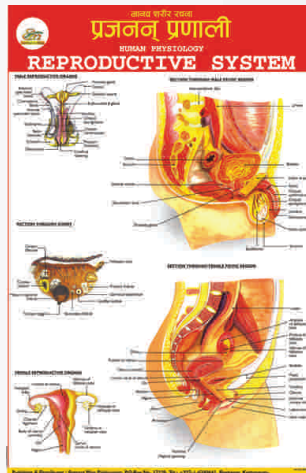
Digestive System



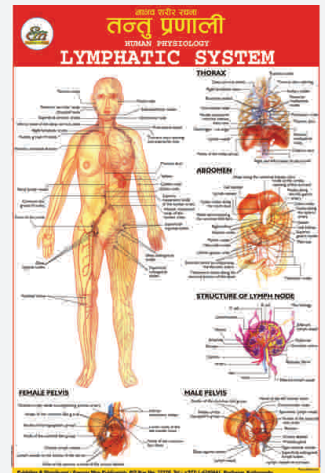
Muscular System



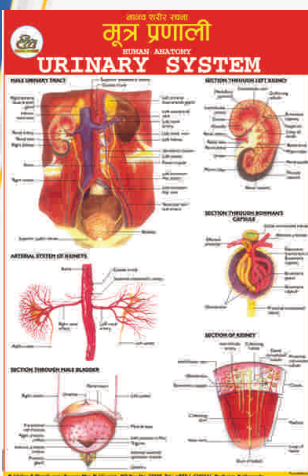
Respiratory System



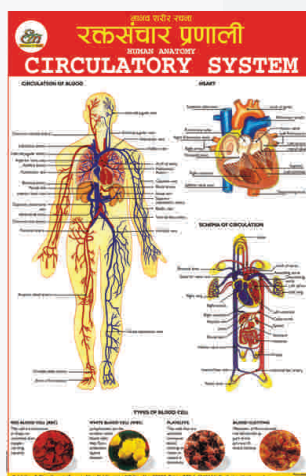
Reproductive System



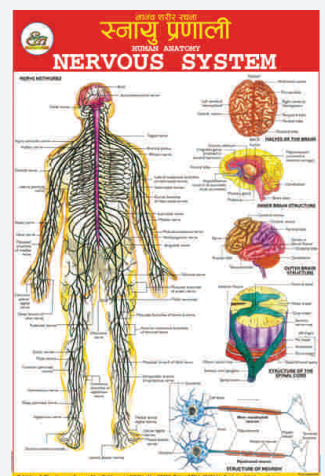
Lymphatic System



Urinary System



Circulatory System



Nervous System

Size : 20×30 Inch  
 Double Side Laminated with Dandi Price: 200  
 Hard Laminated Price : 150



**Life Cycle of Anopheles Mosquito**  
 एनीफोलेक्स जातीका लामखुट्टे को जीवनचक्र  
 Facts & Figures: Anopheles mosquito is a blood-sucking insect. It is the most common mosquito in India. It is responsible for the transmission of malaria. The life cycle of Anopheles mosquito is completed in 10-14 days. It has four stages: Egg, Larva, Pupa, and Adult. The adult stage is the most harmful as it feeds on human blood.

**Life Cycle of Culex Mosquito**  
 कुलेक्स जातीका लामखुट्टे को जीवनचक्र  
 Facts & Figures: Culex mosquito is a blood-sucking insect. It is the most common mosquito in India. It is responsible for the transmission of malaria. The life cycle of Culex mosquito is completed in 10-14 days. It has four stages: Egg, Larva, Pupa, and Adult. The adult stage is the most harmful as it feeds on human blood.

Musquito

**Life Cycle of Butterfly**  
 फतलीको जीवनचक्र  
 Facts & Figures: The butterfly is a beautiful insect. It has four stages: Egg, Chrysalis, Larva, and Adult. The adult stage is the most beautiful as it has colorful wings. The life cycle of butterfly is completed in 2-3 weeks.

**Life Cycle of Silkworm**  
 रेशमदिरको जीवनचक्र  
 Facts & Figures: The silkworm is a caterpillar. It has four stages: Egg, Chrysalis, Larva, and Adult. The adult stage is the most beautiful as it has colorful wings. The life cycle of silkworm is completed in 4-6 weeks.

Butterfly & Silkworm

**Life Cycle of Fern**  
 उन्युको जीवनचक्र  
 Facts & Figures: Ferns are plants that reproduce through spores. The life cycle of fern is completed in 2-3 years. It has two main stages: Sporophyte and Gametophyte. The sporophyte stage is the most visible as it has green leaves and a brown stem.

**Life Cycle of Mushroom**  
 च्याउको जीवनचक्र  
 Facts & Figures: Mushrooms are fungi that reproduce through spores. The life cycle of mushroom is completed in 1-2 weeks. It has two main stages: Mycelium and Spore. The mycelium stage is the most visible as it has a white, fuzzy appearance.

Fern & Mushroom

Size : 20x30 Inch, Laminated with Dandi Price: 200, Hard Laminated Price : 150

**ULTRASTRUCTURE OF A TYPICAL ANIMAL CELL**

- Rough Endoplasmic Reticulum
- Cytoplasm
- Lysosome
- Cell membrane
- Ribosome
- Smooth endoplasmic reticulum
- Vacuole
- Mitochondria
- Protoplasmic Vesicle
- Microvillus
- Centriole
- Peroxisome
- Golgi complex
- Pore of nuclear membrane
- Nucleoplasm

**STRUCTURE OF SOME CELL ORGANELLES**

Shows diagrams of various organelles like Mitochondria, Golgi complex, Nucleus, etc.

Animal Cell

**PLANT CELL**

Shows a detailed diagram of a plant cell with various organelles like Cell wall, Chloroplast, Nucleus, etc.

**PLANT ORGANELLS**

Shows diagrams of various organelles like Chloroplast, Nucleus, etc.

Plant Cell

**Cell Division Mitosis in Plants**

Shows diagrams of various stages of mitosis in plant cells like Prophase, Metaphase, Anaphase, and Telophase.

Mitosis In Plants

**Cell Division Meiosis in Plants**

Shows diagrams of various stages of meiosis in plant cells like Prophase I, Metaphase I, Anaphase I, Telophase I, Prophase II, Metaphase II, Anaphase II, and Telophase II.

Meiosis In Plants

**मानव ज्ञानिन्द्रिय HUMAN SENSE ORGANS**

**EYE**: Cornea, Iris, Lens, Retina, Optic Nerve, etc.

**EAR**: External Auditory Canal, Eardrum, Hammer, Anvil, Stirrup, Cochlea, Vestibule, Semicircular Canals, etc.

**NOSE**: External Nostril, Nasal Cavity, Mucous Membrane, etc.

**TONGUE**: Epiglottis, Pharynx, Uvula, etc.

**SKIN**: Epidermis, Dermis, Hypodermis, etc.

**VISUAL SENSE**: Eye

**SMELL**: Nose

**HEAR**: Ear

**TASTE**: Tongue

**TOUCH**: Skin

Human Sense Organs

Size : 28x40 Inch  
 Laminated with Dandi  
 Price : 300



English Alphabet



नेपाली बर्णमाला



अंक तालिका



Multiplication (1-10)



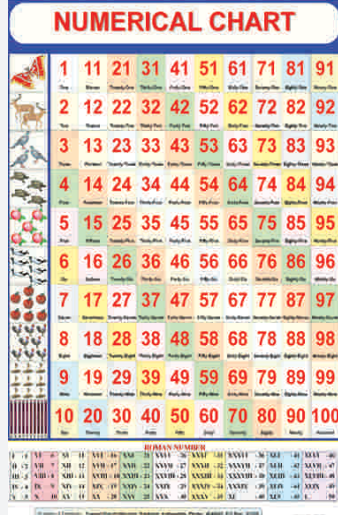
Multiplication (11-20)



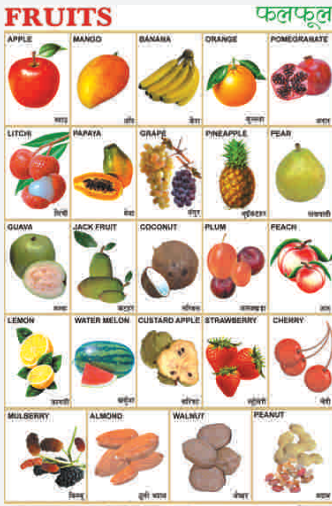
गुणन तालिका (९-१०)



गुणन तालिका (९९-९०)



Numerical



Fruits



Vegetables



World Heritage Site of Nepal



Vehicles



Traffic Signals



Wild Animals



Domestic Animals



Pet Animals



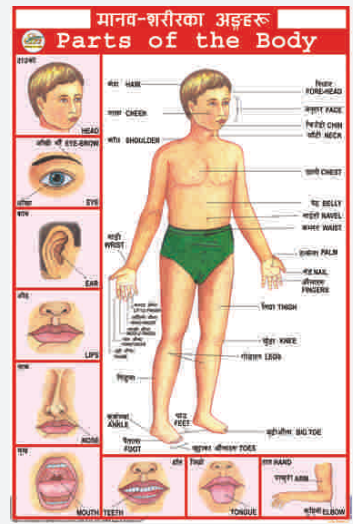
Colours & Shapes



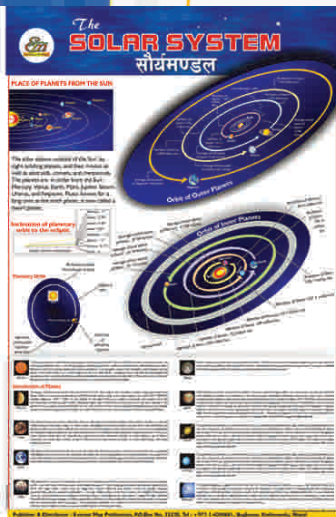
Birds



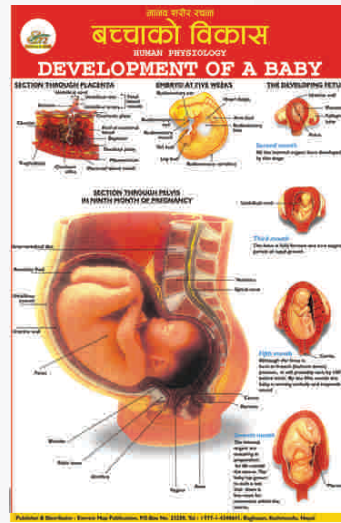
Flowers



Parts of Body



Solar System



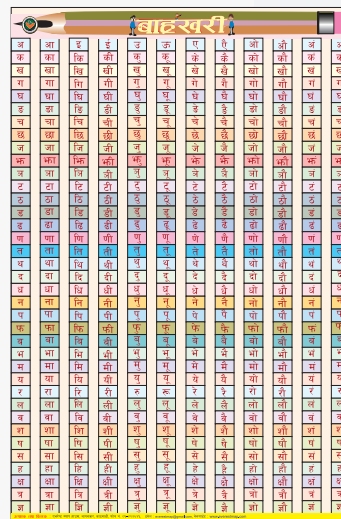
Development of Baby



National Symbol of Nepal



शहिदहरू



afxy/L



Good Habits

## नेपाली लोकबाजाहरू

Nepali Folk Musical Instruments

सोहो	सुपकोठी	सोहो	सुपकोठी
Sankha	Jhyaali	Sahane	Tyambho
दमोहो	सुरमोहो	सोहो	सोहो
Damaaha	Narasinga	Masdal	Dholak
सोरुकोठी	सोहो (सोरुकोठी)	सोहोकोठी	सोहो (सोरुकोठी)
Sarang	Damha (Dumpha)	Dhyangro	Daul
सोहोकोठी	सोहोकोठी	सोहोकोठी	सोहोकोठी
Baan Khaincha	Maa Dhime	Ektare	Himanga
सोहोकोठी	सोहोकोठी	सोहोकोठी	सोहोकोठी
Tip Bamsari (Pitar)	Marchungsa	Hinayo	Tung

Nepali Lok Baja

## बिस्वका कण्डाहरू FLAGS OF THE WORLD

ASIA (Asia)

EUROPE (Europe)

AUSTRALIA (Australia)

Flags of various countries in Asia, Europe, and Australia are displayed in a grid format.

Flag of the world-1

## बिस्वका कण्डाहरू FLAGS OF THE WORLD

AFRICA (Africa)

SOUTH AMERICA (South America)

NORTH AMERICA (North America)

Flags of various countries in Africa, South America, and North America are displayed in a grid format.

Flag of the world-2

## CALENDAR TIME OF THE YEAR

सन्ध्या समय पढा

SEASONS (समयहरू)

MONTHS (महिनाहरू)

WEEK (हप्ता)

TIME (समय)

1. January 7. July 1. बैशाख 9. कार्तिक  
 2. February 8. August 2. फेब्रु 10. मंसिर  
 3. March 9. September 3. चैत्र 11. पुष  
 4. April 10. October 4. मङ्सिर 12. चैत  
 5. May 11. November 5. पौष 13. फागुन  
 6. June 12. December 6. मङ्सिर 14. वैशाख

1. Sunday 5. Thursday 1. सोमबार 3. विहार्  
 2. Monday 6. Friday 2. मंगलबार 4. बुधबार  
 3. Tuesday 7. Saturday 3. बुधबार 5. गुरुबार

40 Second = 1 Minute 30 Days = 1 Month  
 60 Minutes = 1 Hour 30 Months = 1 Year  
 24 Hours = 1 Day 365 Days = 1 Year  
 7 Days = 1 Week 52 Weeks = 1 Year

Calendar of the year

## नेपालका अमर सहिदहरू

Martyr of the Nepal

सुभाषचन्द्र बोस (Subhas Chandra Bose)  
 भगत सिंह (Bhagat Singh)  
 बाबा साहेब आम्बेडकर (Bhausaheb Ambedkar)  
 बाबा साहेब साठवले (Bhausaheb Satavale)

Martier of Nepal

## बाल गीत

कुखुरी को  
 कुखुरी को  
 कुखुरी को  
 कुखुरी को  
 कुखुरी को

साराको को  
 साराको को  
 साराको को  
 साराको को  
 साराको को

साराको को  
 साराको को  
 साराको को  
 साराको को  
 साराको को

Bal Git

## RHYMES

Johnny, Johnny!

Baa Baa Black Sheep

Twinkle, twinkle little star

Johnny, Johnny!  
 Yes, Papa  
 Eating sugar?  
 No Papa  
 Talking lies?  
 No, Papa  
 Open your mouth  
 Ha ha ha

Baa, baa, black sheep,  
 Have you any wool?  
 Yes, sir, yes sir,  
 Three bags full,  
 One for my master,  
 And one for my dame,  
 And one for the little boy  
 Who lives down the lane.

Twinkle, twinkle, little star,  
 How I wonder what you are?  
 Up above the world so high,  
 Like a diamond in the sky!  
 Twinkle, twinkle, little star,  
 How I wonder what you are?  
 Twinkle, twinkle, little star,  
 How I wonder what you are!

Rhymes

## WATER ANIMAL

पानीमा बस्ने जनावरहरू

Aquatic Animal

Dolphin, Shark, Blue Whale, Killer Whale, Salmon, Catfish, Goldfish, Yellow Tang, Eel, Flying Fish, Sea Horse, Octopus, Lobster, Prawn, Star Fish, Jellyfish

Amphibian Animal

Seal, Sea Lion, Sea Turtle, Frog, Tortoise, Platypus, Penguin, Crab, Snake, Crocodile, Hippopotamus

Water Animal

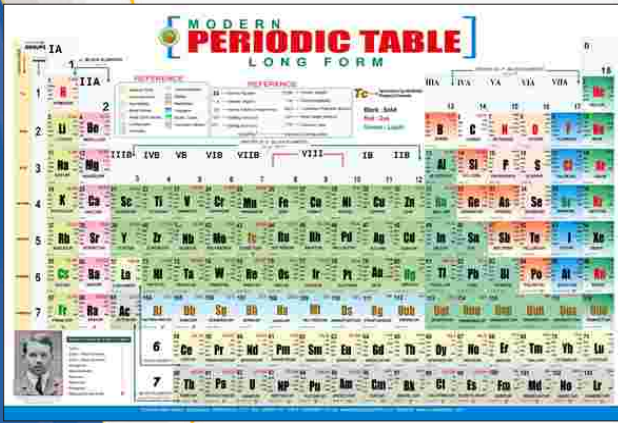
## Domestic Animal & Baby

घर पामने जनावर र बाल

Cow, Goat, Buffalo, Pig, Sheep, Horse, Dog, Cat, Rabbit, Chicken, Duck, Turkey, Lamb, Piglet, Calf, Kid, Lamb, Piglet, Calf, Kid, Lamb, Piglet, Calf, Kid

Domestic Animal & Baby

CHARTS



**Periodic Table**  
 Laminated with Dandi  
 Size 28×40 Inch  
 Price: 300  
 Size 20×30  
 Hard Laminated  
 Price: 150  
 Tin Patti  
 Price: 50



**White Board**  
 Laminated with Dandi  
 Size 28×40 Inch  
 Price: 250



**Graph Chart**  
 Laminated with Dandi  
 Size 28×40 Inch  
 Price: 250

## Globe & Flash Card



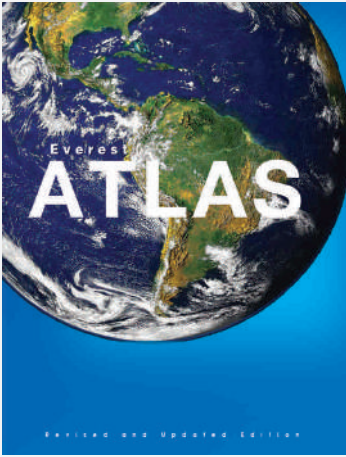
**Flash Card**

Price  
 Rs.  
 150/-



**Globe**

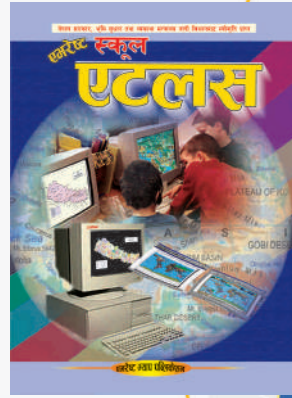
30cm- Rs. 1750  
 20 cm - Rs. 800  
 12.5cm - Rs. 480



Everest Atlas  
(English Medium)  
Price : 350



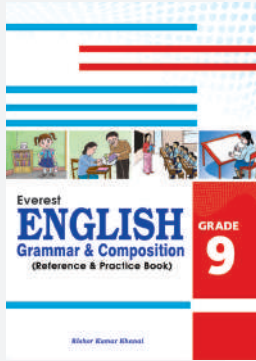
Everest Atlas  
(Nepali Medium)  
Price : 290



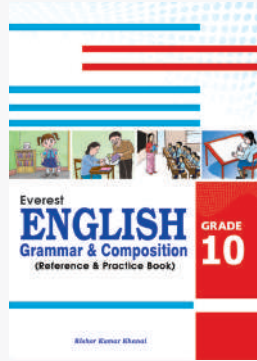
Everest School Atlas  
(Nepali Medium)  
Price : 150



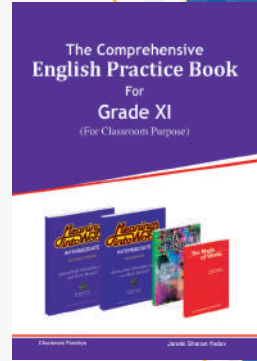
Everest All In One  
Price : 250



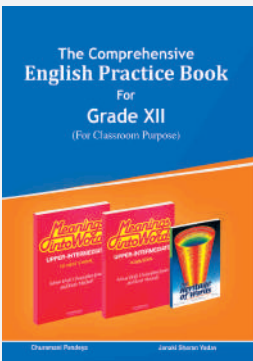
English  
Practice Book  
Grade-9  
Price : 325



English  
Practice Book  
Grade-10  
Price : N/A



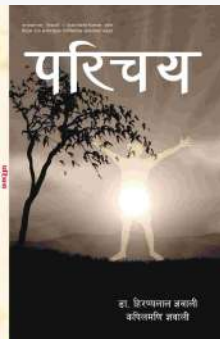
English  
Practice Book  
Grade-11  
Price : 290



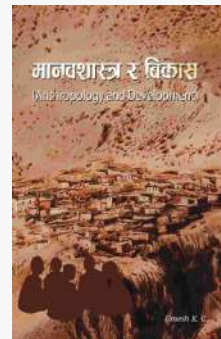
English  
Practice Book  
Grade-12  
Price : 225



किड्स लेक्सिक्स सिफ  
दुबो म? = ! ( (

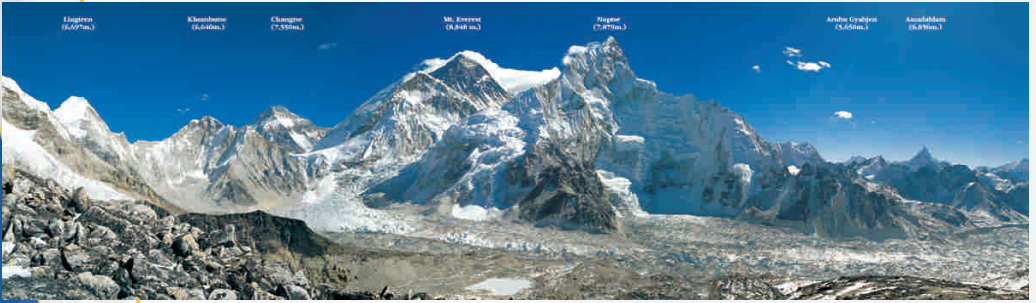


kl/ro  
दुबो म? = @! (



dfgjzf:q / lasf;  
दुबो म? = ! ( )

# BOOKS



Mt. Everest



Sarangkot



Fewa Lake



Dhampus (Toribari)

**PRICE:**

- Big Poster ( Size: 14x39 inch) 150
- Medium Poster ( Size: 11.5x34 inch) 100
- Small Poster ( Size: 6x18 inch)





Pokhara Valley From Stupa



Sunrise From Fewa Lake



Fewa Lake



Sunset From Fewa Lake

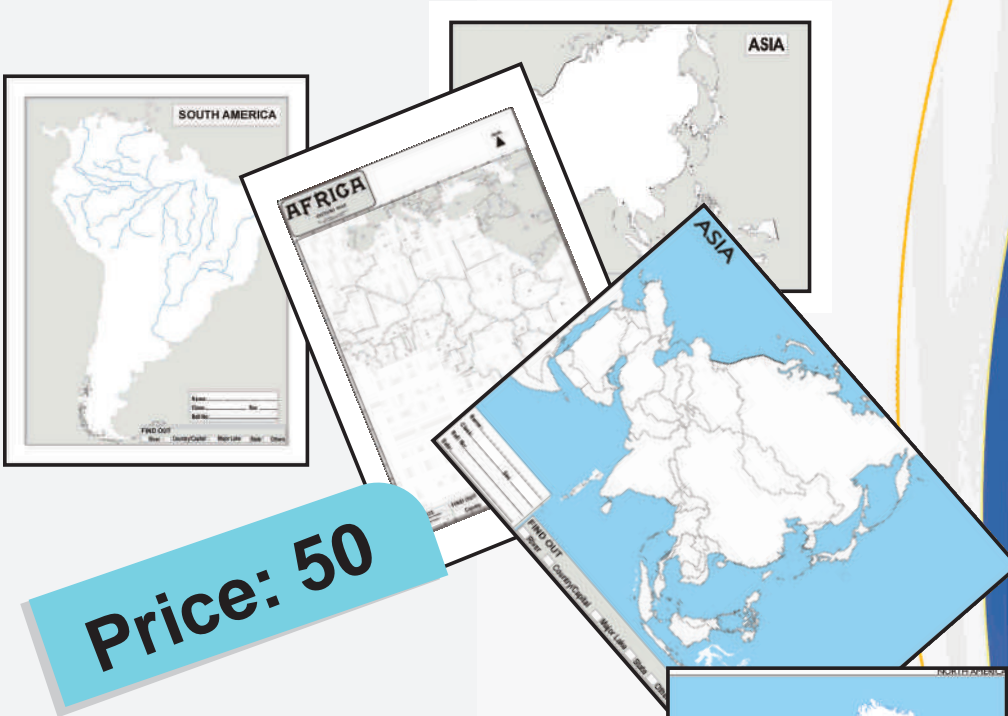
**PRICE:**

Big Poster ( Size: 14x39 inch)	150
Medium Poster ( Size: 11.5x34 inch)	100
Small Poster ( Size: 6x18 inch)	

# POSTCARD, BOOK MARK & STIKER



Postcard (4.25x6.4 Inch)	=	Rs. 10
Postcard (4x9)	=	Rs. 15
Book Mark	=	Rs. 30
Stikar 4 Inch Plain	=	Rs. 10
Stikar 3 Inch Plain	=	Rs. 10
Stikar Fridge Magnet	=	Rs. 40



## OUTLINE MAP

Asia (Political & Physical)

Europe (Political & Physical)

Australia (Political & Physical)

North America (Political & Physical)

South America (Political & Physical)

Africa (Political & Physical)

World (Political & Physical)

Nepal (Political & Physical)

Saarc (Political & Physical)



## Also Available Education Materials

- Globes
- Abacus
- Geometrical Box
- Skeletal Shape
- Eclip Shape
- Day and Night Shape
- Phases of Moon Shape
- Season Shape
- Solar System Shape
- Win Roll Shape
- Global Warming Shape
- and many more



LEADING IN MAPS **Publication**

# EVEREST MAP

Bagbazar, kathmandu, Nepal, Tel : +977-1-4240641, P. O. Box : 23220

Email : [everestmap@gmail.com](mailto:everestmap@gmail.com), Website : [www.everestmap.com](http://www.everestmap.com)